



## DAILY ENERGY PRODUCTION

NET ENERGY FOR LOAD

### MONTHLY (MWh)

Month	Actual FYE2016	Actual FYE2017	Change vs. Last Year	2016 Forecast FYE2017*	Above or Below the Forecast
Jul	2,442,225	2,638,651	8.0%	2,636,423	0.1%
Aug	2,701,247	2,603,932	-3.6%	2,822,305	-7.7%
Sep	2,659,292	2,362,339	-11.2%	2,343,384	0.8%
Oct	2,447,721	2,137,883	-12.7%	2,223,439	-3.8%
Nov	1,960,881	2,054,430	4.8%	2,016,320	1.9%
Dec	2,093,422	2,100,977	0.4%	2,144,215	-2.0%
Jan	2,051,331	2,122,542	3.5%	2,174,151	-2.4%
Feb	1,927,107	1,873,996	-2.8%	1,958,083	-4.3%
Mar	2,040,277	2,091,291	2.5%	2,136,017	-2.1%
Apr	2,003,317	1,994,640	-0.4%	2,068,573	-3.6%
May	2,033,192	2,143,463	5.4%	2,204,582	-2.8%
Jun	2,368,401			2,224,371	
FYTD	24,360,009	24,124,144	-1.0%	24,727,492	-2.4%
Total	26,728,410			26,951,863	

\*Figures are from the 2016 Forecast

### DAILY (MWh)

Week of: June 5, 2017

Day	Date	Actual	Forecast	Above the Forecast	% Diff.	Avg of Previous 4 Weeks
Mon	05-Jun-17	75,066	75,333	-266	-0.4%	68,536
Tue	06-Jun-17	72,747	77,061	-4,314	-5.6%	71,009
Wed	07-Jun-17	71,237	77,061	-5,824	-7.6%	69,805
Thu	08-Jun-17	71,294	77,061	-5,767	-7.5%	69,453
Fri	09-Jun-17	72,184	77,294	-5,111	-6.6%	70,690
Sat	10-Jun-17	64,368	66,847	-2,478	-3.7%	66,830
Sun	11-Jun-17	60,346	66,847	-6,501	-9.7%	65,667
Weekly Total		487,243	517,504	-30,261	-5.8%	-3.0%

### HOURLY (MW)

Day	Hi Temp	Norm Hi Temp*	Max	Hour	Min	Hour
Mon	76°	77°	3,889	5:00 PM	2,252	4:00 AM
Tue	73°	77°	3,544	4:00 PM	2,392	4:00 AM
Wed	72°	77°	3,391	5:00 PM	2,387	4:00 AM
Thu	70°	77°	3,345	6:00 PM	2,367	4:00 AM
Fri	77°	78°	3,554	6:00 PM	2,329	4:00 AM
Sat	75°	78°	3,061	9:00 PM	2,338	7:00 AM
Sun	72°	78°	2,961	9:00 PM	2,139	7:00 AM

High temperature as measured at the L.A. Civic Center.

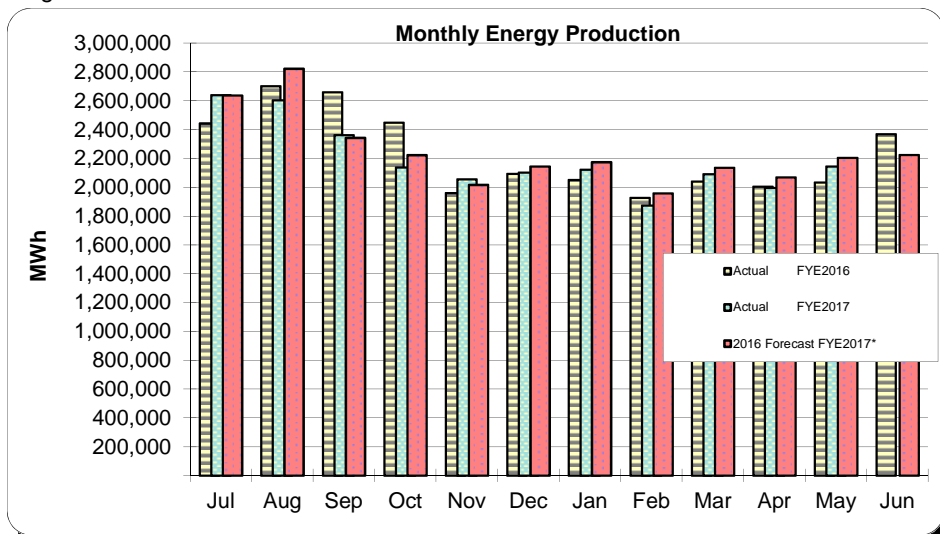
\* Data obtained from the Weather Bureau

### PEAK DEMAND NEL (MW)

	MW	Date	Day	Hour	MWH	Max Temp
2017	4,297	5/22/2017	Mon	6:00 PM	79,902	81
Forecast	5,721	8/18/2016	Thu	4:00 PM	N/A	N/A

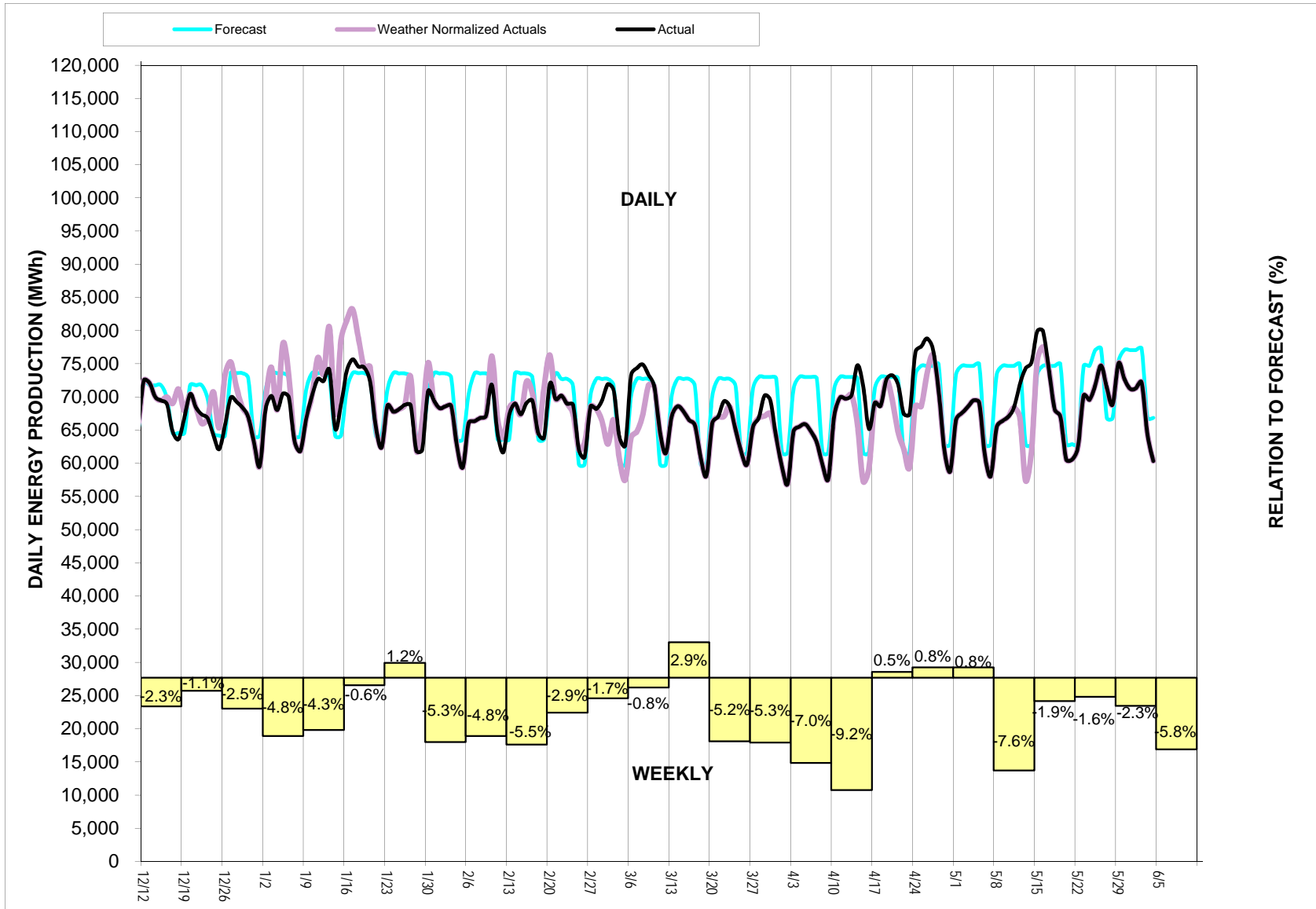
	MW	Date	Day	Hour	MWH	Max Temp
All-time	6,343	9/16/2014	Tue	5:00 PM	114,878	103

Max Temp is measured at the Civic Center.



DAILY ENERGY PRODUCTION

NET ENERGY FOR LOAD



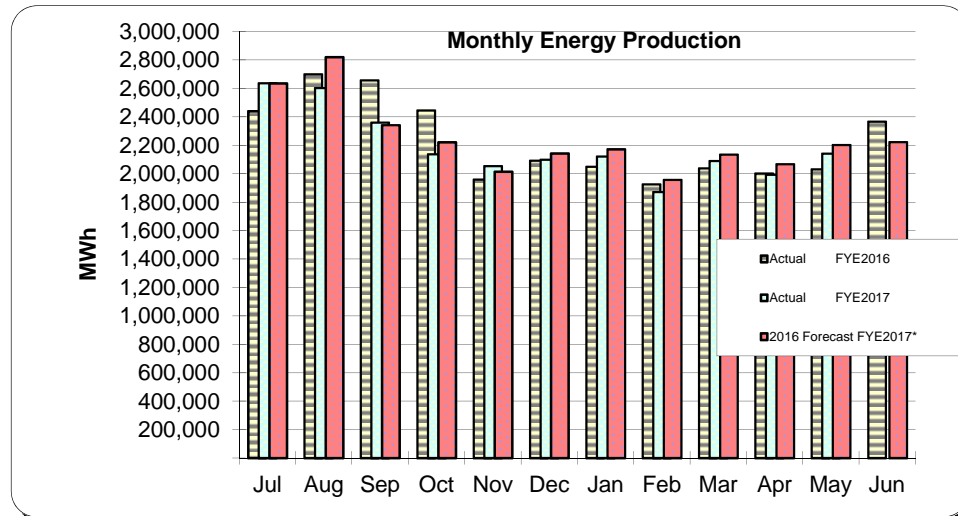
## ENERGY PRODUCTION COMPARISON

NET ENERGY FOR LOAD

### MONTHLY (MWh)

Month	Actual FYE2016	Actual FYE2017	Change vs. Last Year	2016 Forecast FYE2017*	Above or Below the Forecast
Jul	2,442,225	2,638,651	8.0%	2,636,423	0.1%
Aug	2,701,247	2,603,932	-3.6%	2,822,305	-7.7%
Sep	2,659,292	2,362,339	-11.2%	2,343,384	0.8%
Oct	2,447,721	2,137,883	-12.7%	2,223,439	-3.8%
Nov	1,960,881	2,054,430	4.8%	2,016,320	1.9%
Dec	2,093,422	2,100,977	0.4%	2,144,215	-2.0%
Jan	2,051,331	2,122,542	3.5%	2,174,151	-2.4%
Feb	1,927,107	1,873,996	-2.8%	1,958,083	-4.3%
Mar	2,040,277	2,091,291	2.5%	2,136,017	-2.1%
Apr	2,003,317	1,994,640	-0.4%	2,068,573	-3.6%
May	2,033,192	2,143,463	5.4%	2,204,582	-2.8%
Jun	2,368,401			2,224,371	
FYTD	24,360,009	24,124,144	-1.0%	24,727,492	-2.4%
Total	26,728,410			26,951,863	

\* Figures are from the 2016 Forecast



### DAILY SUMMARY (MWh)

Week of: June 5, 2017

Day	Date	FYE 2016 Actual (MWh)	FYE 2017 vs. FYE 2016 Avg	FYE2017 vs. FYE2015 Avg	FYE2017 vs. FYE2014 Avg
Mon	05-Jun-17	75,066	7.4%	3.6%	-8.7%
Tue	06-Jun-17	72,747	5.0%	3.4%	-8.2%
Wed	07-Jun-17	71,237	-0.3%	2.0%	-10.4%
Thu	08-Jun-17	71,294	-3.7%	1.9%	-10.7%
Fri	09-Jun-17	72,184	-2.1%	4.3%	-7.4%
Sat	10-Jun-17	64,368	4.2%	8.3%	-3.7%
Sun	11-Jun-17	60,346	10.2%	8.6%	-4.7%

### DAILY SUMMARY (MW)

Day	Date	Hi Temp	Normal Hi Temp*	Max MW	Min MW
Mon	05-Jun-17	76°	77°	3,889	2,252
Tue	06-Jun-17	73°	77°	3,544	2,392
Wed	07-Jun-17	72°	77°	3,391	2,387
Thu	08-Jun-17	70°	77°	3,345	2,367
Fri	09-Jun-17	77°	78°	3,554	2,329
Sat	10-Jun-17	75°	78°	3,061	2,338
Sun	11-Jun-17	72°	78°	2,961	2,139

The temperature is measured at the L.A. Civic Center.

\* Data obtained from the Weather Bureau

### ANNUAL PEAK DEMAND (MW)

Year	NEL	NPL	Date	Day
2007	6,071	6,107	8/31/2007	Fri
2008	6,006	6,053	6/20/2008	Fri
2009	5,709	5,793	9/3/2009	Thu
2010	6,142	6,177	9/27/2010	Mon
2011	5,907	5,938	9/7/2011	Wed
2012	5,782	5,827	8/29/2012	Wed
2013	5,862	5,906	9/5/2013	Thu
2014	6,343	6,396	9/16/2014	Tue
2015	6,234	6,282	9/9/2015	Wed
2016	6,052	6,220	6/20/2016	Mon

*The all-time high for a daily peak occurred on Tuesday September 16, 2014 with 6,343 MW.*

*The energy was 114,878 MWh.*

*The temperature was 103° at the Civic Center.*

# ENERGY PRODUCTION COMPARISON

NET ENERGY FOR LOAD

