

SYSTEM BRIEF

DAILY SUMMARY

DAY	DATE	<u>MaxTemp</u>	<u>NEL (MWH)</u>	MAXIMUM	<u>Hr Ending</u>	MINIMUM	<u>Hr Ending</u>	* ANNUAL LOAD FACTOR	<u>(PEAK HOURS 7:00 AM TO 10:00 PM MON-SAT)</u>		<u>INCREMENTAL COST</u>	
		Civic	TOTAL		@Max		@Min		ON PEAK	OFF PEAK	ON PEAK	OFF PEAK
Wed	11/1/2017	72	66,440	3,200	7:00 PM	2,105	4:00 AM	43.0%	48,059	18,381	33.3	36.7
Thu	11/2/2017	68	65,653	3,139	7:00 PM	2,089	4:00 AM	42.5%	47,390	18,263	38.1	36.7
Fri	11/3/2017	71	64,720	3,074	7:00 PM	2,063	4:00 AM	41.9%	46,605	18,115	38.1	36.7
Sat	11/4/2017	72	59,965	2,945	8:00 PM	2,055	5:00 AM	38.8%	41,985	17,980	34.4	36.7
Sun	11/5/2017	70	58,090	2,925	7:00 PM	1,986	4:00 AM	37.6%	-	58,090	-	35.4
Mon	11/6/2017	73	65,108	3,236	6:00 PM	1,992	3:00 AM	42.2%	47,600	17,508	39.3	37.4
Tue	11/7/2017	76	65,846	3,268	6:00 PM	2,037	4:00 AM	42.7%	47,997	17,849	45.5	40.4
Wed	11/8/2017	77	66,356	3,323	6:00 PM	2,022	4:00 AM	43.0%	48,388	17,968	44.9	39.0
Thu	11/9/2017	72	65,890	3,248	6:00 PM	2,054	4:00 AM	42.7%	47,948	17,942	43.1	41.3
Fri	11/10/2017	71	62,991	3,114	6:00 PM	2,007	4:00 AM	40.8%	45,334	17,657	44.8	46.4
Sat	11/11/2017	73	58,864	2,934	7:00 PM	1,997	5:00 AM	38.1%	41,497	17,367	40.4	39.8
Sun	11/12/2017	69	57,467	2,914	7:00 PM	1,996	4:00 AM	37.2%	-	57,467	-	39.8
Mon	11/13/2017	73	63,885	3,240	6:00 PM	1,969	4:00 AM	41.4%	46,544	17,341	39.4	40.8
Tue	11/14/2017	78	65,390	3,209	7:00 PM	2,030	4:00 AM	42.4%	47,633	17,757	53.2	47.0
Wed	11/15/2017	79	65,935	3,305	6:00 PM	2,035	4:00 AM	42.7%	48,121	17,814	47.4	49.8
Thu	11/16/2017	78	66,935	3,322	6:00 PM	2,031	4:00 AM	43.4%	48,954	17,981	47.5	42.4
Fri	11/17/2017	73	66,727	3,285	6:00 PM	2,067	4:00 AM	43.2%	48,531	18,195	37.7	36.3
Sat	11/18/2017	78	59,023	2,873	6:00 PM	2,010	4:00 AM	38.2%	41,646	17,377	34.9	36.3
Sun	11/19/2017	77	56,298	2,845	7:00 PM	1,937	5:00 AM	36.5%	-	56,298	-	37.3
Mon	11/20/2017	-	-	-	-	-	-	0.0%	-	-	-	-
Tue	11/21/2017	-	-	-	-	-	-	0.0%	-	-	-	-
Wed	11/22/2017	-	-	-	-	-	-	0.0%	-	-	-	-
Thu	11/23/2017	-	-	-	-	-	-	0.0%	-	-	-	-
Fri	11/24/2017	-	-	-	-	-	-	0.0%	-	-	-	-
Sat	11/25/2017	-	-	-	-	-	-	0.0%	-	-	-	-
Sun	11/26/2017	-	-	-	-	-	-	0.0%	-	-	-	-
Mon	11/27/2017	-	-	-	-	-	-	0.0%	-	-	-	-
Tue	11/28/2017	-	-	-	-	-	-	0.0%	-	-	-	-
Wed	11/29/2017	-	-	-	-	-	-	0.0%	-	-	-	-
Thu	11/30/2017	-	-	-	-	-	-	0.0%	-	-	-	-

MONTHLY SUMMARY (TO DATE)

DATE	<u>NEL(MWH)</u>	<u>NEL (MWH)</u>				<u>ENERGY (GWH)</u>		<u>INCREMENTAL COST</u>	
	TOTAL	MAXIMUM	HE@Max	MINIMUM	HE@Min	ON PEAK	OFF PEAK	ON PEAK	OFF PEAK
Nov-17	1,201,581	3,323	6:00 PM	1,937	5:00 AM	744	457	41.38	39.25
	Max for Last 12 mths	Max Occurred On		Min Occurred On		SYSTEM PRODUCTION COSTS			
	6,432	Wed 11/8/2017		Sun 11/19/2017		<u>HIGH PEAK</u>	<u>LOW PEAK</u>	<u>BASE</u>	
	NEL(MWH)	66,356	NEL(MWH)	56,298	NEL(MWH)	42.74	43.92	39.25	

HE= Hour Ending * Annual Load Factor Formula Used: (Daily kWh)/(max (MW for last 12 months)*24 hrs)

DAILY ENERGY PRODUCTION

NET ENERGY FOR LOAD

MONTHLY (MWh)

Month	Actual FYE2017	Actual FYE2018	Change vs. Last Year	2017 Forecast FYE2018*	Above or Below the Forecast
Jul	2,638,651	2,724,013	3.2%	2,531,432	7.6%
Aug	2,603,932	2,681,317	3.0%	2,586,304	3.7%
Sep	2,362,339	2,417,069	2.3%	2,489,360	-2.9%
Oct	2,137,883	2,272,181	6.3%	2,253,375	0.8%
Nov	2,054,430			1,957,456	
Dec	2,100,977			2,029,500	
Jan	2,122,542			2,004,542	
Feb	1,873,996			1,818,423	
Mar	2,091,291			2,048,461	
Apr	1,994,640			1,973,652	
May	2,143,463			2,077,713	
Jun	2,333,374			2,246,312	
FYTM	9,742,805	10,094,580	3.6%	9,860,471	2.4%
Total	26,457,518			26,016,530	

DAILY (MWh)

Week of: November 13, 2017

Day	Date	Actual	Forecast	Above the Forecast	% Diff.	Avg of Previous 4 Weeks
Mon	13-Nov-17	63,885	66,220	-2,335	-3.5%	74,714
Tue	14-Nov-17	65,390	68,133	-2,743	-4.0%	78,500
Wed	15-Nov-17	65,935	68,133	-2,198	-3.2%	76,876
Thu	16-Nov-17	66,935	68,133	-1,198	-1.8%	72,070
Fri	17-Nov-17	66,727	69,108	-2,382	-3.4%	68,609
Sat	18-Nov-17	59,023	59,952	-929	-1.5%	61,893
Sun	19-Nov-17	56,298	59,952	-3,654	-6.1%	60,458
Weekly Total		444,192	459,632	-15,439	-3.4%	0.6%

HOURLY (MW)

Day	Hi Temp	Norm Hi Temp*	Max	Hour	Min	Hour
Mon	73°	73°	3,240	6:00 PM	1,969	4:00 AM
Tue	78°	73°	3,209	7:00 PM	2,030	4:00 AM
Wed	79°	73°	3,305	6:00 PM	2,035	4:00 AM
Thu	78°	73°	3,322	6:00 PM	2,031	4:00 AM
Fri	73°	73°	3,285	6:00 PM	2,067	4:00 AM
Sat	78°	72°	2,873	6:00 PM	2,010	4:00 AM
Sun	77°	72°	2,845	7:00 PM	1,937	5:00 AM

High temperature as measured at the L.A. Civic Center.

* Data obtained from the Weather Bureau

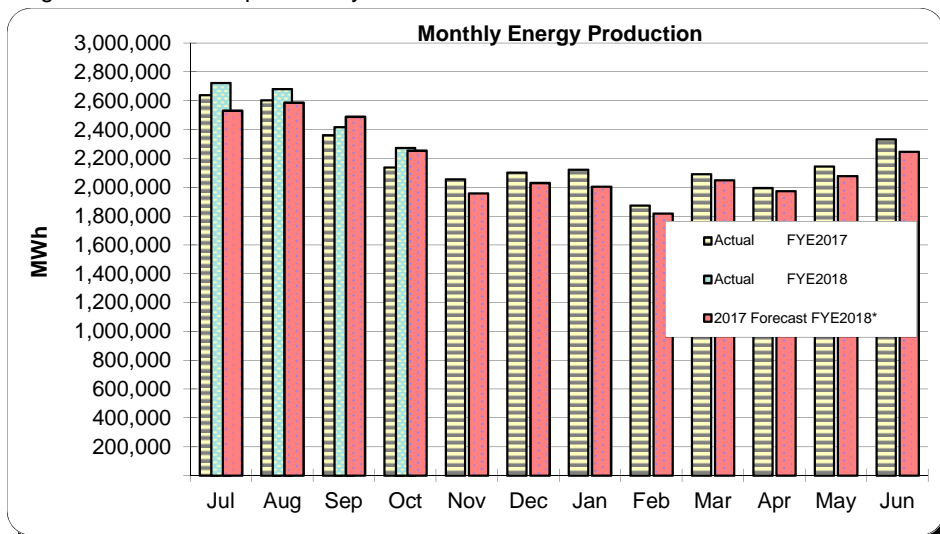
PEAK DEMAND NEL (MW)

	MW	Date	Day	Hour	MWH	Max Temp
2017	6,432	8/31/2017	Thu	5:00 PM	117,060	102
Forecast	5,761	8/24/2017	Thu	4:00 PM	N/A	N/A

	MW	Date	Day	Hour	MWH	Max Temp
All-time	6,432	8/31/2017	Thu	5:00 PM	117,060	102

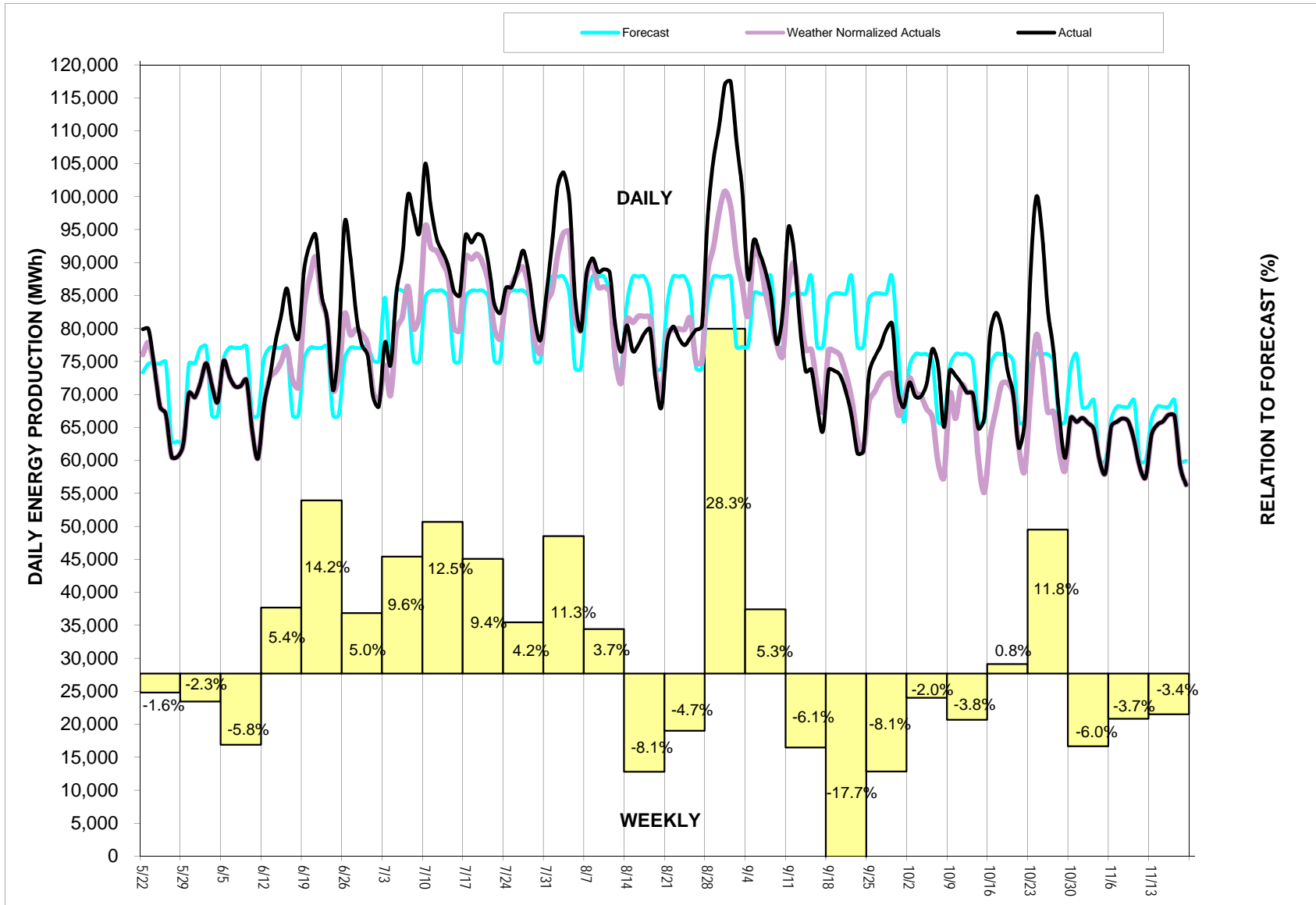
Max Temp is measured at the Civic Center.

*Figures are from the preliminary 2017 Forecast



DAILY ENERGY PRODUCTION

NET ENERGY FOR LOAD



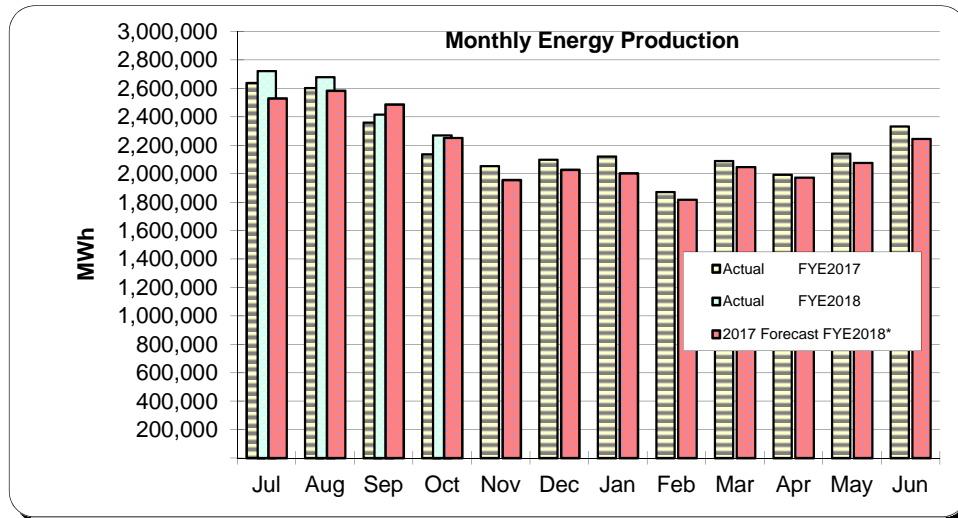
ENERGY PRODUCTION COMPARISON

NET ENERGY FOR LOAD

MONTHLY (MWh)

Month	Actual FYE2017	Actual FYE2018	Change vs. Last Year	2017 Forecast FYE2018*	Above or Below the Forecast
Jul	2,638,651	2,724,013	3.2%	2,531,432	7.6%
Aug	2,603,932	2,681,317	3.0%	2,586,304	3.7%
Sep	2,362,339	2,417,069	2.3%	2,489,360	-2.9%
Oct	2,137,883	2,272,181	6.3%	2,253,375	0.8%
Nov	2,054,430			1,957,456	
Dec	2,100,977			2,029,500	
Jan	2,122,542			2,004,542	
Feb	1,873,996			1,818,423	
Mar	2,091,291			2,048,461	
Apr	1,994,640			1,973,652	
May	2,143,463			2,077,713	
Jun	2,333,374			2,246,312	
FYTM	9,742,805	10,094,580	3.6%	9,860,471	2.4%
Total	26,457,518			26,016,530	

* Figures are from the preliminary 2017 Forecast



DAILY SUMMARY (MWh)

Week of: November 13, 2017

Day	Date	FYE 2018 Actual (MWh)	FYE 2018 vs. FYE 2017 Avg	FYE2018 vs. FYE2016 Avg	FYE2018 vs. FYE2015 Avg
Mon	13-Nov-17	63,885	0.2%	1.4%	2.7%
Tue	14-Nov-17	65,390	5.1%	8.7%	7.2%
Wed	15-Nov-17	65,935	1.7%	6.6%	3.9%
Thu	16-Nov-17	66,935	-3.1%	1.8%	-0.5%
Fri	17-Nov-17	66,727	-4.9%	-2.2%	-2.9%
Sat	18-Nov-17	59,023	-5.3%	-4.2%	-3.3%
Sun	19-Nov-17	56,298	-7.2%	-6.1%	-4.9%

DAILY SUMMARY (MW)

Day	Date	Hi Temp	Normal Hi Temp*	Max MW	Min MW
Mon	13-Nov-17	73°	73°	3,240	1,969
Tue	14-Nov-17	78°	73°	3,209	2,030
Wed	15-Nov-17	79°	73°	3,305	2,035
Thu	16-Nov-17	78°	73°	3,322	2,031
Fri	17-Nov-17	73°	73°	3,285	2,067
Sat	18-Nov-17	78°	72°	2,873	2,010
Sun	19-Nov-17	77°	72°	2,845	1,937

The temperature is measured at the L.A. Civic Center.

* Data obtained from the Weather Bureau

ANNUAL PEAK DEMAND (MW)

Year	NEL	NPL	Date	Day
2008	6,006	6,053	6/20/2008	Fri
2009	5,709	5,793	9/3/2009	Thu
2010	6,142	6,177	9/27/2010	Mon
2011	5,907	5,938	9/7/2011	Wed
2012	5,782	5,827	8/29/2012	Wed
2013	5,862	5,906	9/5/2013	Thu
2014	6,343	6,396	9/16/2014	Tue
2015	6,234	6,282	9/9/2015	Wed
2016	6,052	6,220	6/20/2016	Mon
2017	6,432	6,502	8/31/2017	Thu

The all-time high for a daily peak occurred on Thursday August 31, 2017 with 6,432 MW. The energy was 117,060 MWh. The temperature was 102° at the Civic Center.

ENERGY PRODUCTION COMPARISON

NET ENERGY FOR LOAD

